

# Quick start guide DDA kit

## Mini Monitor for use with Telecare Communicators



### Connecting to Tunstall Lifeline Vi+

Any questions? Call us on +353 (0)1 247 9007

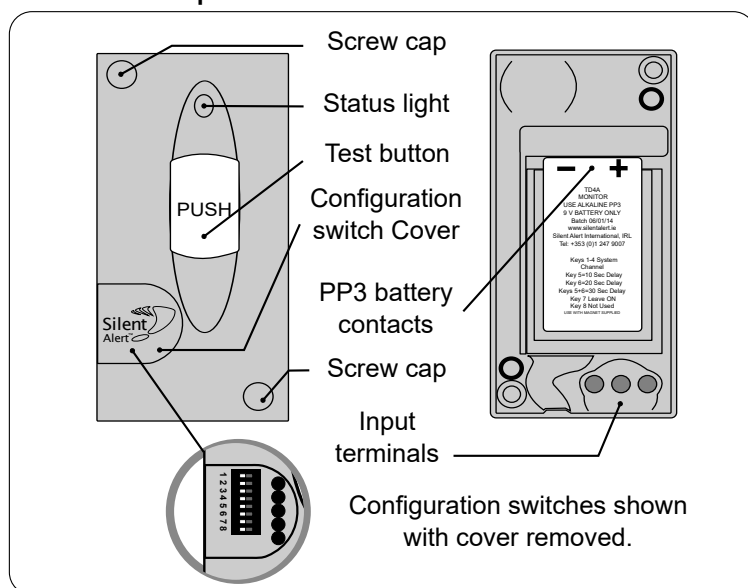
This quick start guide explains the process of connecting Silent Alert equipment to certain Telecare communicators for DDA compliance.

Whilst a wireless smoke alarm unit will alert the call centre, a deaf or hard of hearing person may miss the alarm and be unaware of the danger. By using a Silent Alert DDA kit, the user will be alerted immediately and can respond or react as necessary. This ensures deaf and hard of hearing people can be made aware of integrated Telecare smoke alarms whilst reducing false alarm call outs.

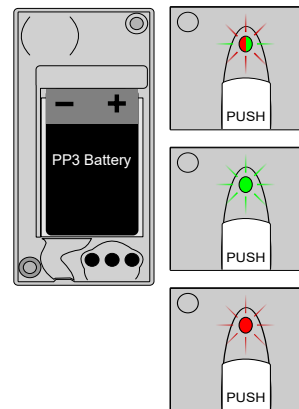
The user will also be able to expand on the benefits of the Telecare system by having access to doorbell, telephone, baby alarm and door entry systems whilst still having the security of a remotely monitored smoke alarm and emergency pendant.

**This information is not intended to replace the manufacturers user instructions. The assistance of the Telecare providers technicians will be required to enable correct output.**

### Standard operation



1. Install a 9 volt PP3 alkaline or lithium battery making sure to observe the correct polarity.



When a battery is first fitted the indicator light will flash red then green a few times.

The light will then flash green several times to show the battery voltage.  
9 flashes = 9Volts in the battery.

If the light flashes red at this point the battery is flat and will need to be replaced.

To repeat the battery check remove the battery, press the test button then re-insert the battery to start the sequence again.

2. Move control keys 5, 6 & 7 to the right.

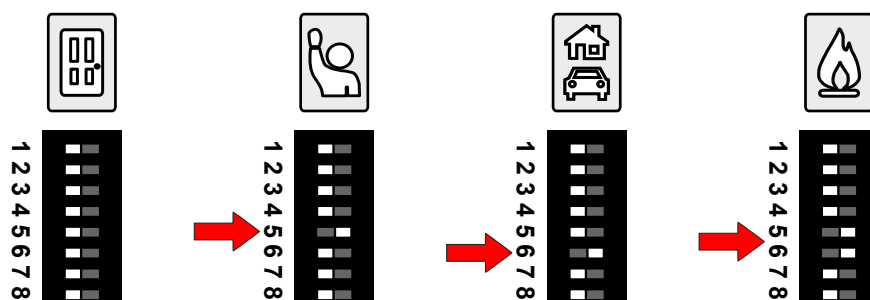
3. The monitor will now trigger when the telecare unit activates its external output.  
A fire signal will be sent to the Pager or SignWave when the Telecare relay activates.

4. Enabling deaf or hard of hearing people to respond to Telecare smoke alarms.

It is possible for the monitor to light up different keys on the Pager or SignWave.

Move the relevant key to the right .

Press the test button and check the correct event is received by the Pager or SignWave



For more information on configuring the Mini Monitor please refer to the dedicated quick guide supplied with each unit. Alternatively, you can download the information from our website at [www.silentalert.ie](http://www.silentalert.ie).

# Quick start guide DDA kit

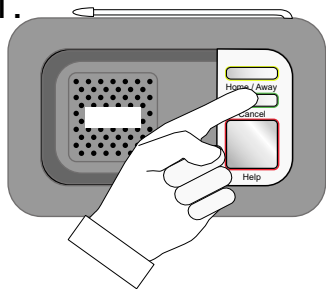

## Connecting Silent Alert to the Tunstall Lifeline Vi+



Any questions? Call us on +353 (0)1 247 9007

### Connecting to Tunstall Lifeline Vi+

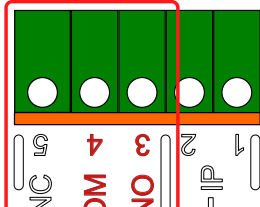
The following quick guide will explain how to link the Silent Alert system to Telecare communicators. Always refer to the Communicator's installation instructions before connecting our unit to the system. The Telecare technician should refer to page 40 of the installation and programming guide regarding hardwired output.

1. 
- Connect a telephone to the socket on the home unit labelled .
- Place the unit into programming mode by pressing and holding down the green cancel button until it beeps (approx 5 seconds). The home unit announces "programming mode" and the red alarm button flashes slowly.

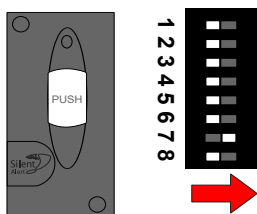
2. Lift the handset of the telephone and enter the quick code required.
- For use with Silent Alert equipment dial the code
- ## 3013
- This will activate the mini monitor when the telecare smoke alarm activates and will notify the user via the Pager or SignWave receiver.

3. Additional settings  
**NOTE:** For best results with the Silent Alert system we recommend code **3013**.

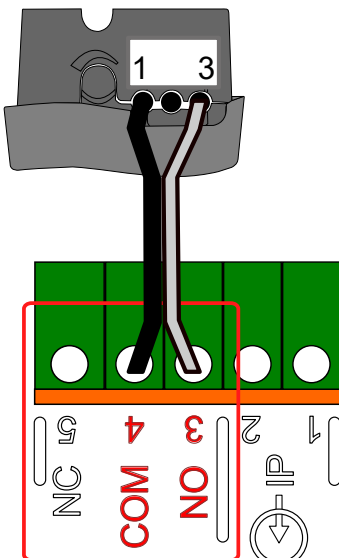
3011	Activate external relay for 2 seconds	All alarms (Call raised)
3012	Activate external relay for all alarms when call selected and de-activate when calls cleared	Call Selected Call Cleared
<b>3013</b>	<b>Activate external relay on radio smoke alarm and de-activate when cleared</b>	<b>Smoke Alarm Call Cleared</b>
3014	Disable external relay for all events	

4. 
- The hardwired output in Vi+ home unit provides common (COM), normally closed (NC) and normally open (NO) contacts.

5. On the Mini Monitor move control key 7 to the right.



This will configure the monitor to trigger on a short circuit.

6. 
- Connect a suitable length of twin core low voltage cable to terminals 3 & 4 of the Tunstall unit (shown here in grey and black).
- Connect the free end to the Silent Alert mini monitor using terminals 1 & 3.
- Make sure the common (negative) wire on the bell push is connected to terminal 1 on the mini monitor to avoid false triggering. Secure with the locking screws.

7. The monitor will now trigger the Pager or SignWave each time the telecare systems smoke alarm activates.

#### WARNING

Do not connect the equipment in any way other than illustrated.  
Silent Alert International accepts no responsibility for damage caused by incorrect installation.