

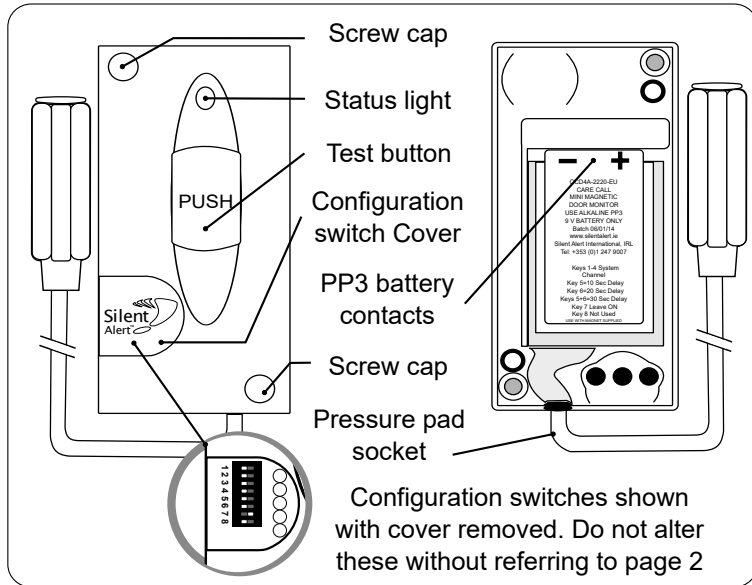
Quick start guide CL4A-2212-EU

Mini Chair Leaving Monitor



Any questions? Call us on +353 (0)1 247 9007

PM5 Activation



1. Install a 9 volt PP3 alkaline or lithium battery making sure to observe the correct polarity.

When a battery is first fitted the indicator light will flash red then green a few times.

PUSH

PUSH

The light will then will flash green several times to show the battery voltage.
9 flashes = 9Volts in the battery.

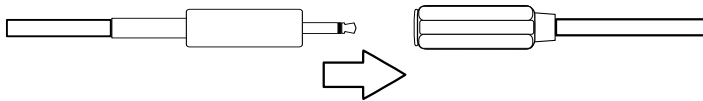
PUSH

If the light flashes red at this point the battery is flat and will need to be replaced.

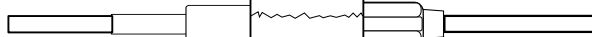
To repeat the battery check remove the battery, press the test button then re-insert the battery to start the sequence again.

2. The monitor is activated using an under carpet pressure pad (PM2).

Plug the PM2 plug into the socket on the monitor.

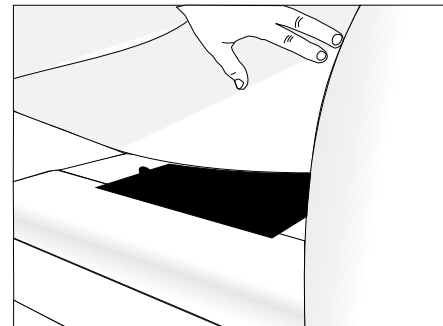


The connection can be taped for added security if required.



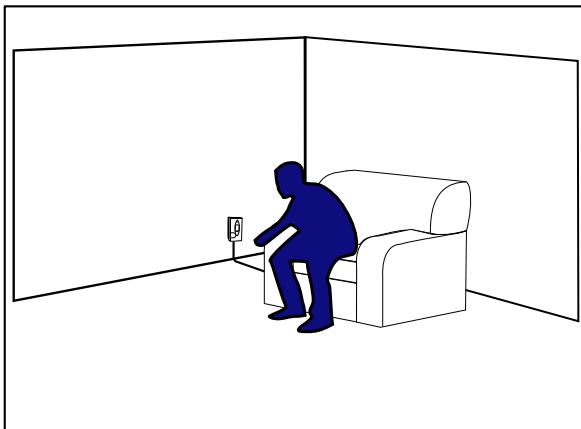
The monitor may transmit the first time the connection is made, this is normal.

3. Place the pad under the chair cushion ensuring the pad is not folded.



When installing the pad make sure the cable can't cause a trip hazard.

4. As the user stands up the monitor will send a signal to the Pager or SignWave.



Advanced settings CL4A-2212-EU

Mini Chair Leaving Monitor



Any questions? Call us on +353 (0)1 247 9007

It is possible for the monitor to light up a different key on the Pager or SignWave. This allows more than one chair leaving monitor to be used on a SA3000 system.

Move the relevant key to the right.

Press the test button and check the correct event is received by the Pager or SignWave.

Key 7 must be left on.

Changing the system channel code

NOTE. In most cases it is not necessary to change the system code. However, when one or more systems are in close proximity, system codes can be used to avoid interference from other SA3000 systems using up to a maximum of 16 channels.

The monitor is supplied with no system code switches set (system code 1). For reference this is the factory setting should you need to re-set the unit.

System codes can be set using key switches 1 - 4.

The diagram to the right shows the 16 possible combinations.

Be sure that the same system code is set on the receiver to be used and any other monitoring options in that system.

KEY 7 MUST BE LEFT ON!