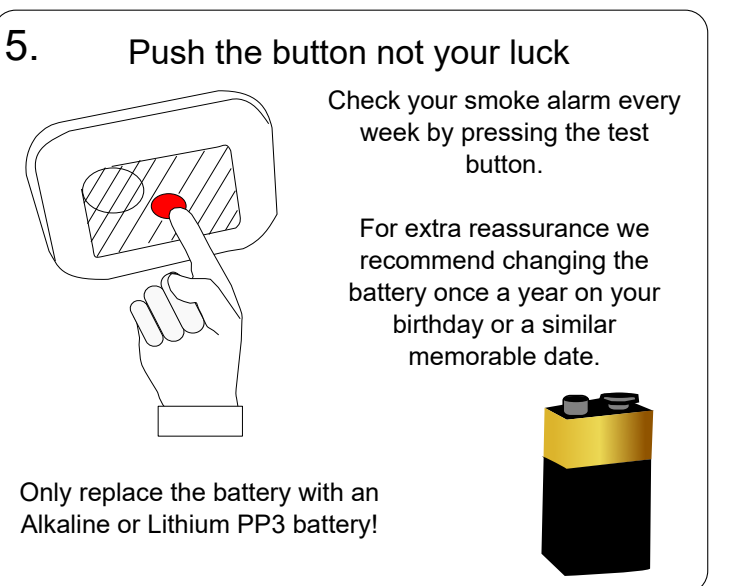
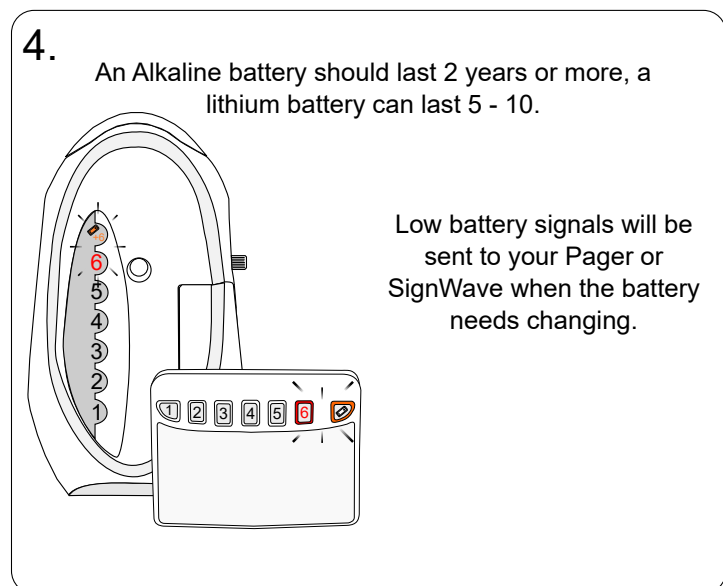
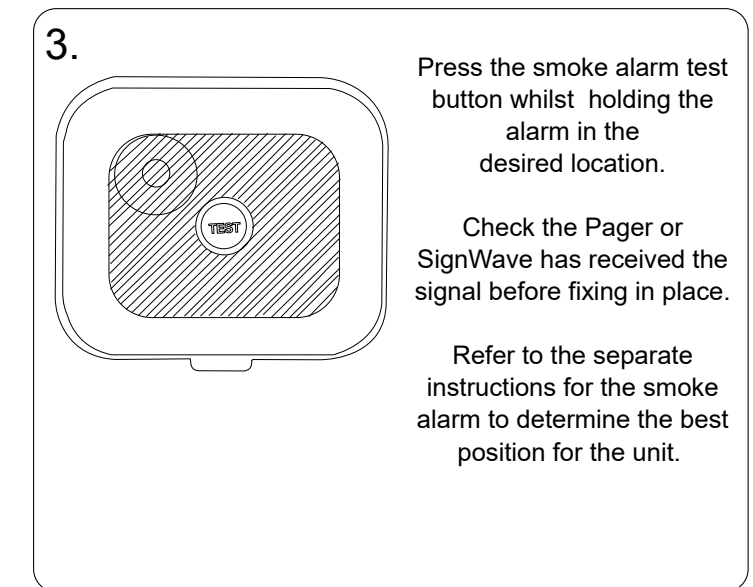
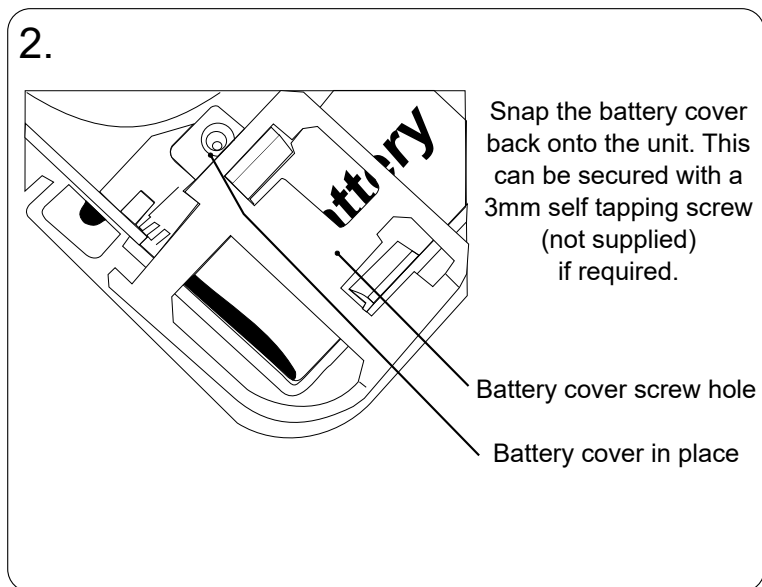
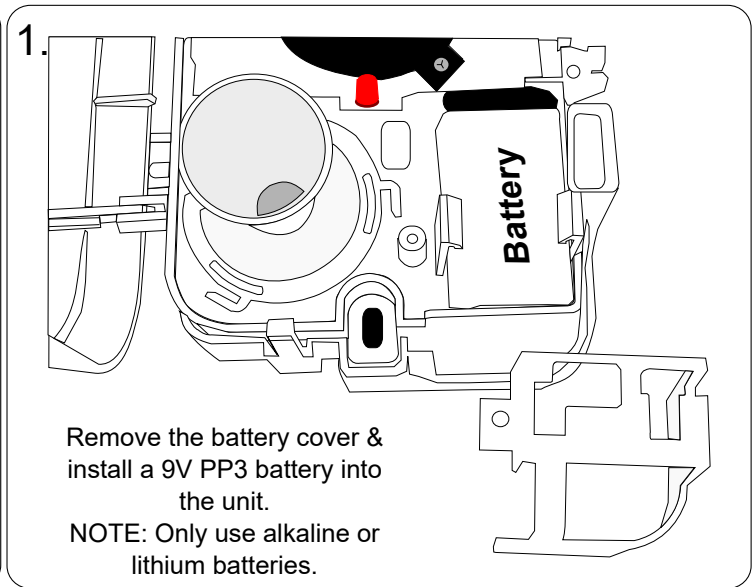
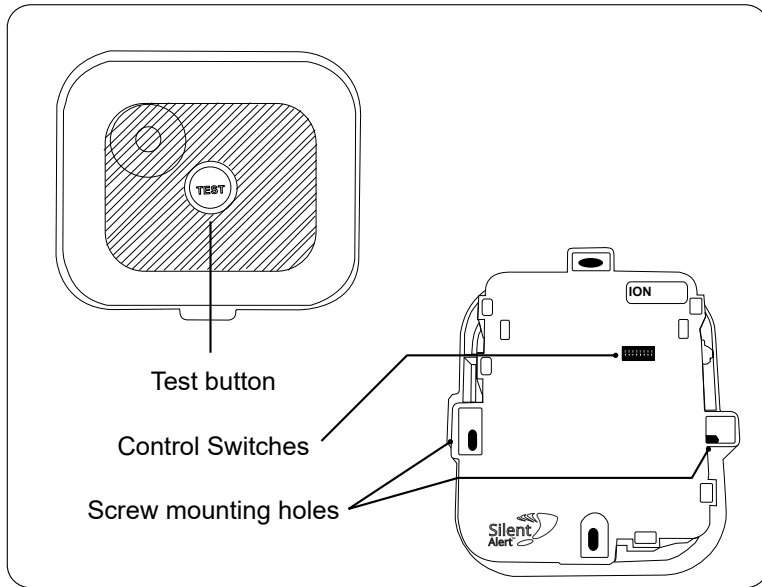


### Getting started

Any questions? Call us on +353 (0)1 247 9007



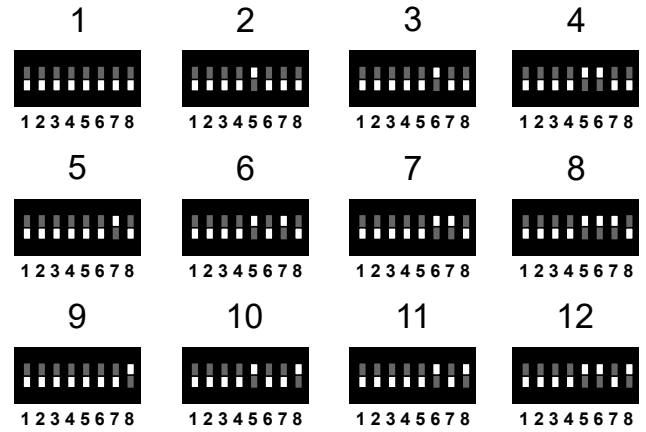
Any questions? Call us on +353 (0)1 247 9007

### Changing the zone

**NOTE.** If you want to use more than one smoke alarm or have a monitor already set to zone one, the smoke alarm can be configured to another zone as follows.

The monitor is supplied with no zone switches set (zone 1). For reference this is the factory setting should you need to re-set the unit.

Zones can be set using key switches 5 - 8. The diagram to the right shows the 12 possible combinations.



### Changing the system channel code

**NOTE.** In most cases it is not necessary to change the system code. However, when one or more systems are in close proximity, system codes can be used to avoid interference from other Care Call systems using up to a maximum of 16 system channels.

The monitor is supplied with no system code switches set (system code 1). For reference this is the factory setting should you need to re-set the unit.

System codes can be set using key switches 1 - 4. The diagram to the right shows the 16 possible combinations. Be sure that the same system code is set on the receiver to be used and any other monitors in that system.

