

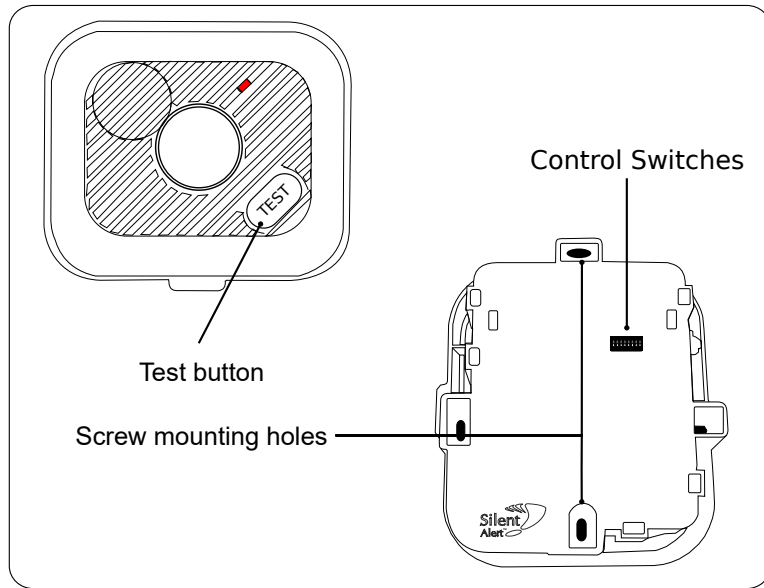
# Quick start guide CCS-HEAT-DETECTOR

## Care Call Heat Detector

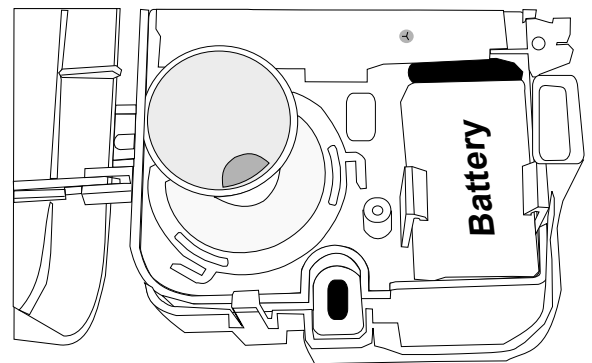


### Getting started

Any questions? Call us on +353 (0)1 247 9007



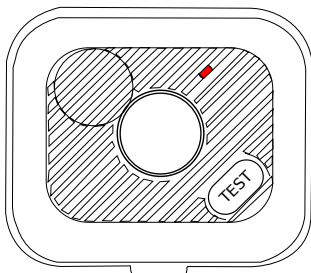
1.



Install a 9V PP3 battery into the unit.

NOTE: Only use alkaline or lithium batteries.

2.



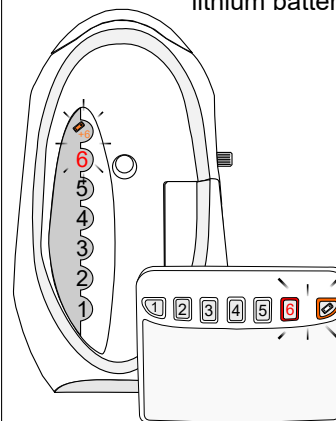
Press the heat detector test button whilst holding the alarm in the desired location.

Refer to the separate EI instructions for the heat detector to determine the best position for the unit.

Check the Pager or SignWave has received the signal before fixing in place.

3.

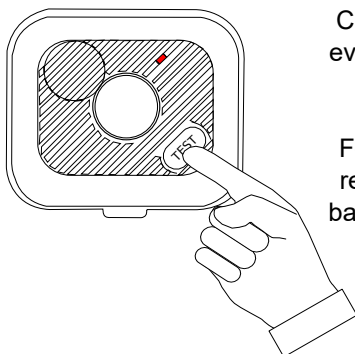
An Alkaline battery should last 2 years or more, a lithium battery can last 5 - 10.



Low battery signals will be sent to your Pager or SignWave when the battery needs changing.

4.

Push the button not your luck



Check your smoke alarms every week by pressing the test button.

For extra reassurance we recommend changing the battery once a year on your birthday or a similar memorable date.

Only replace the battery with an Alkaline or Lithium PP3 battery!



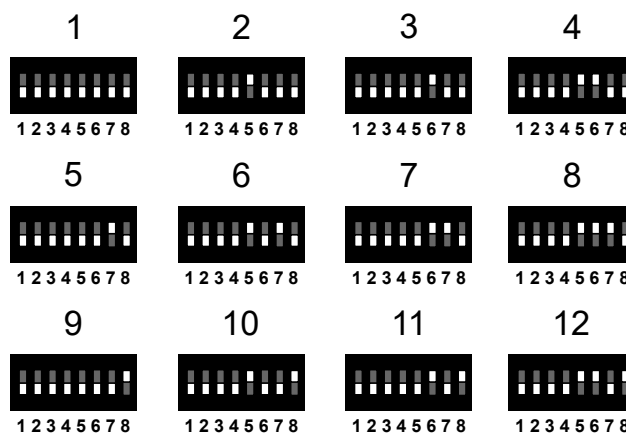
Any questions? Call us on +353 (0)1 247 9007

### Changing the zone

**NOTE.** If you want to use more than one heat detector or have a monitor already set to zone one, the heat detector can be configured to another zone as follows.

The monitor is supplied with no zone switches set (zone 1). For reference this is the factory setting should you need to re-set the unit.

Zones can be set using key switches 5 - 8. The diagram to the right shows the 12 possible combinations.



### Changing the system channel code

**NOTE.** In most cases it is not necessary to change the system code. However, when one or more systems are in close proximity, system codes can be used to avoid interference from other Care Call systems using up to a maximum of 16 system channels.

The monitor is supplied with no system code switches set (system code 1). For reference this is the factory setting should you need to re-set the unit.

System codes can be set using key switches 1 - 4. The diagram to the right shows the 16 possible combinations. Be sure that the same system code is set on the receiver to be used and any other monitors in that system.

