

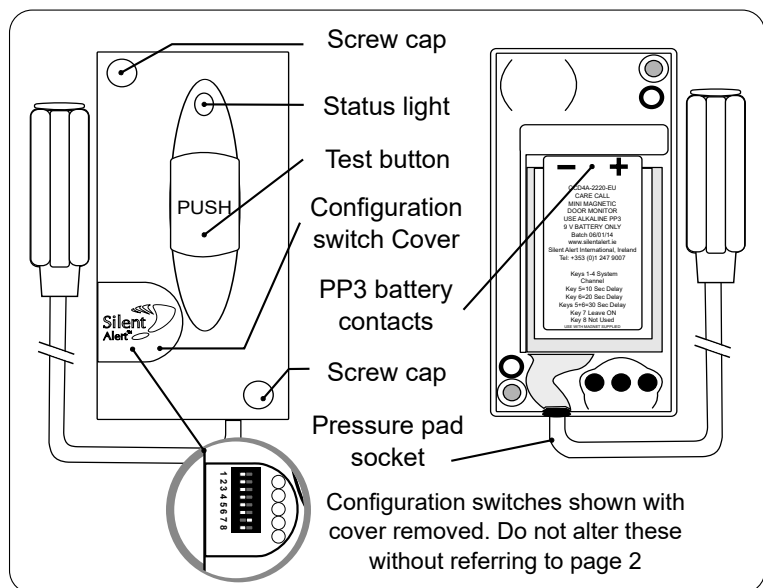
Quick start guide CCC4A-2212-EU

Care Call Mini Chair Leaving Monitor

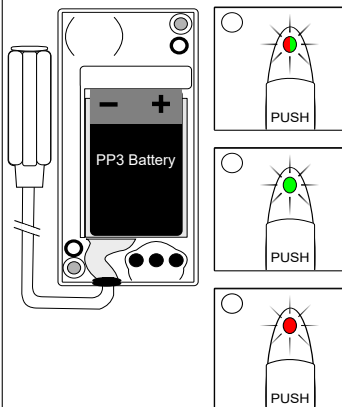


Chair leaving monitor

Any questions? Call us on +353 (0)1 247 9007



1. Install a 9 volt PP3 alkaline or lithium battery making sure to observe the correct polarity.



When a battery is first fitted the indicator light will flash red then green a few times then light solid green & pause briefly.

The light will then will flash green several times to show the battery voltage.

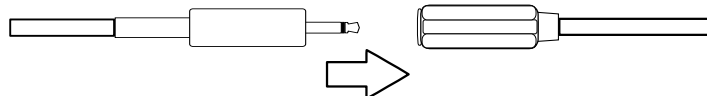
9 flashes = 9Volts in the battery.

If the light flashes red at this point the battery is flat and will need to be replaced.

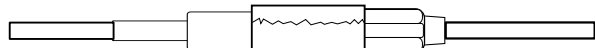
To repeat the battery check remove the battery, press the test button then re-insert the battery to start the sequence again.

2. The monitor is activated using an under carpet pressure pad (PM5).

Connect the PM5 plug into the socket on the monitor.

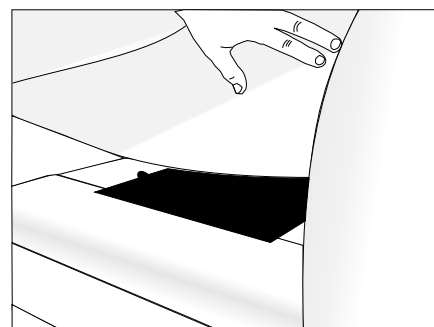


The connection can be taped for added security if required.



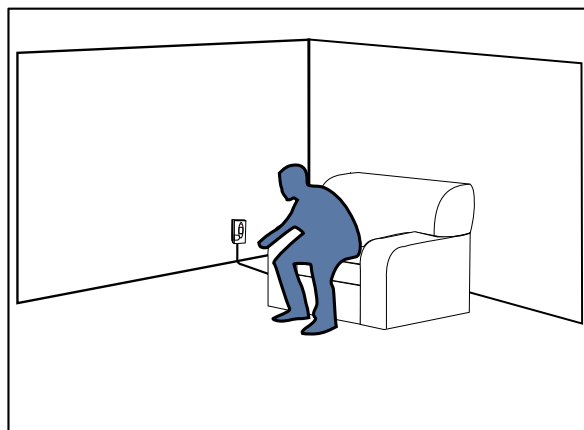
The monitor may transmit the first time the connection is made, this is normal.

3. Place the Pad under the chair cushion ensuring the pad is not folded.

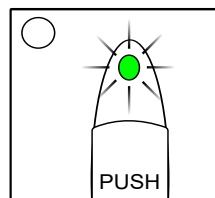


When installing the pad make sure the cable can't cause a trip hazard.

4. As the user stands up the monitor will send a signal to the Pager or SignWave.



5. Fidget delay



To prevent the unit triggering when the user changes position in their seat the monitor has a 'fidget' delay.

If the person releases the pressure from the pad a timer will start, this is indicated by the green light flashing on the monitor.

After 3 - 4 seconds the monitor will trigger. However, if the person sits back down the light will switch off and the monitor will not transmit.

Advanced settings CCC4A-2212-EU

Care Call Mini Chair Leaving Monitor



Any questions? Call us on +353 (0)1 247 9007

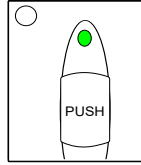
Changing the Zone

The unit will by default cause zone 1 on the pager or signwave to light.

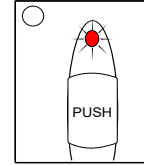
1. To change the zone you need to reset the monitor:

Remove the battery, press the push button, replace the battery.

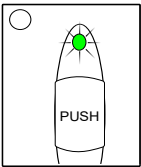
2. After the flashing red/green startup sequence the light will shine constant green.



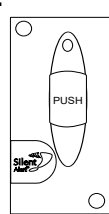
3. Press and release the test button whilst the light is green. The light will flash red once, twice then three times and so on up to twelve.



4. To set the zone number, briefly press the test button at the desired number of flashes. The indicator light will flash green to confirm the selection.



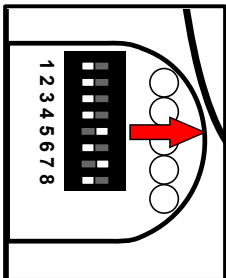
5. The monitor will then perform the battery voltage level display and start as normal. Press the test button to confirm the correct zone has been selected.



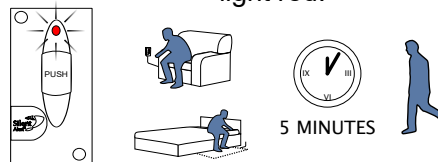
Movement return delays

It is possible to add a non-return delay to enable a period of time to pass from the sensor detecting movement to the monitor sending a signal. This can be useful to allow a user get a drink or visit the bathroom without triggering the system.

1. Move key 5 across to the right



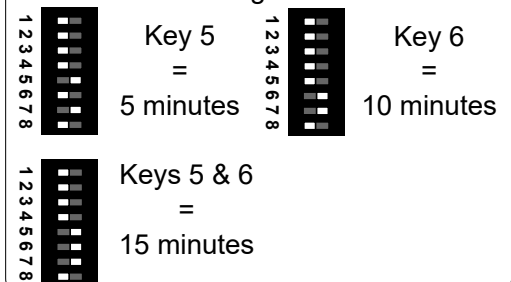
2. Now, instead of triggering instantly the monitor will display it has detected movement by flashing the status light red.



A count down timer will start. If the person returns within the time period the monitor will disarm and reset.

3. If the monitor doesn't detect movement in the allotted time it will send a signal to the Pager or SignWave.

The timer is configurable as shown.



Changing the system channel code

NOTE. In most cases it is not necessary to change the system code. However, when one or more systems are in close proximity, system codes can be used to avoid interference from other Care Call systems using up to a maximum of 16 channels.

The monitor is supplied with no system code switches set (system code 1). For reference this is the factory setting should you need to re-set the unit.

System codes can be set using key switches 1 - 4.

The diagram to the right shows the 16 possible combinations.

KEY 7 MUST BE LEFT ON!

Be sure that the same system code is set on the receiver to be used and any other monitoring options in that system.

